

LOAD - DEQ

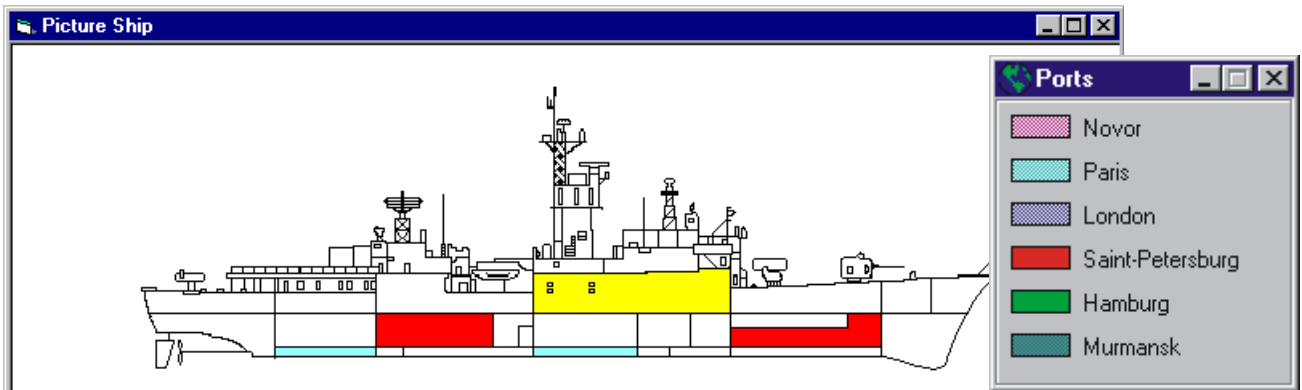
MULTI LOADING ONLINE CONTROL AND STABILITY SYSTEM - MLOCSS

CARGOPLAN, STABILITY AND STRENGTH CALCULATION FOR INTACT AND DAMAGE VESSELS

LOAD-DEQ software is a full-scale Windows 95, NT application.

Displacement, list, trim, stability, damaged stability and stress calculations based on data are given by sensors or inputted in computer in an interactive mode.

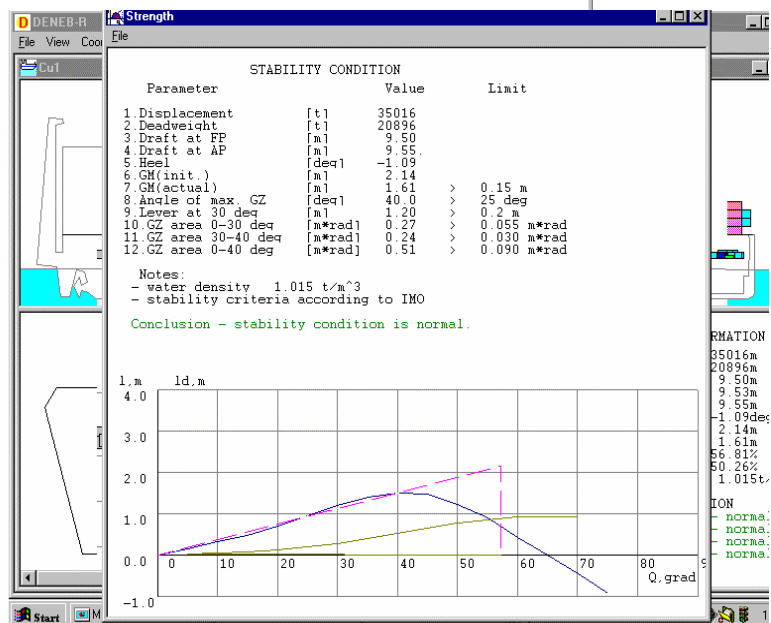
Calculation of all trim and stability parameters is in accordance with the requirements of IMO, normal documents and national regulation. All calculating values have a graphic presentation.

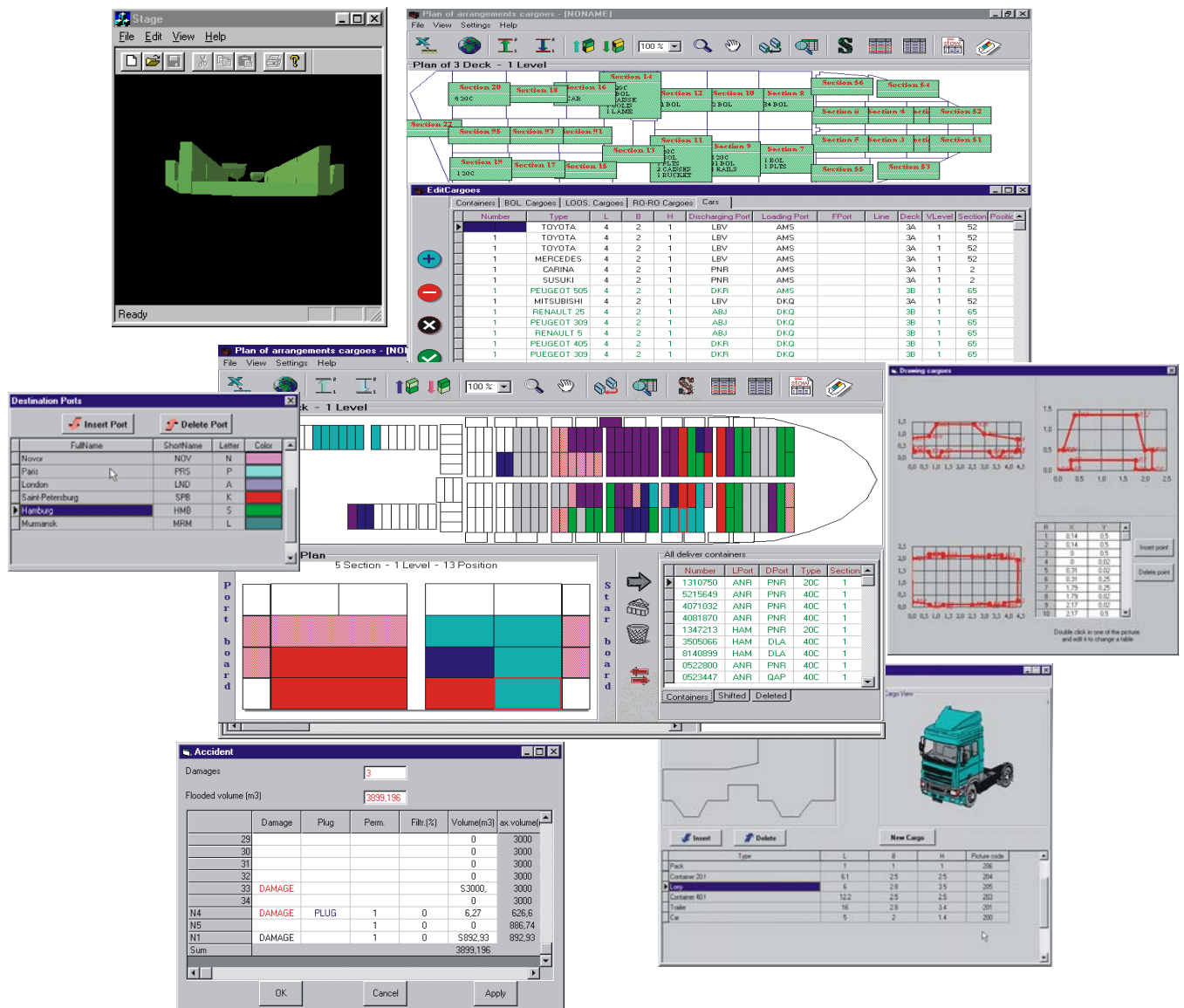


Ballast tanks

Level from sensors: 0% 100% 50%

TANKS	Max. volume (m3)	Volume (m3)	Percent (%)	Weight (t)	Level	Density
ForePC	137	68.5	50.	68.5	5.	1.
N18T(S)	234	23.4	10.	23.4	.5	1.
N18T(P)	248	24.8	10.	24.8	.5	1.
N28T(PS)	576	57.6	10.	57.6	.5	1.
N38T(S)	301	150.5	50.	150.5	1.5	1.
N38T(P)	320	160.	50.	160.	1.5	1.
N48T	617	308.5	50.	308.5	1.5	1.
N68T(S)	339	169.5	50.	169.5	1.5	1.
N68T(P)	367	183.5	50.	183.5	1.5	1.
Sum				1142.		
Mx.My.Mz				2544.301	-180.932	846.017
Ix.Iy				942.25	2600.	





Software is easily adaptable for different vessel types.

It is used for calculation the safety exploitation any displacement-type vessels including heavy-lift, floating docks and offshore platforms and to prepare some documentation for port authorities, stevedores, ship owners. There is a possibility to form a cargo plan for Ro-Ro and container ship in 3D mode and to dispose cargo units in an interactive mode.

LOAD-DEQ software can be successful used both on onboard and an office computers to plan cargoes transport.

NAUTICAL DIGITAL EQUIPMENT

3 Rue Rosenwald – 75015 Paris – France

Tel: + 33 (0)1 56 56 75 75 – Fax: + 33 (0)1 56 56 05 15

Email: info@naudeq.com – Internet: <http://www.naudeq.com>

