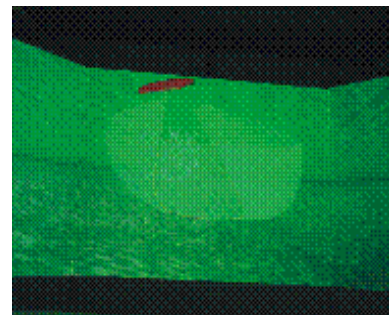
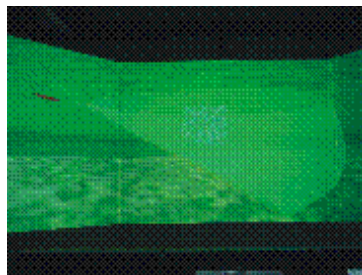
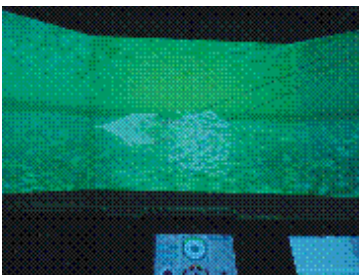
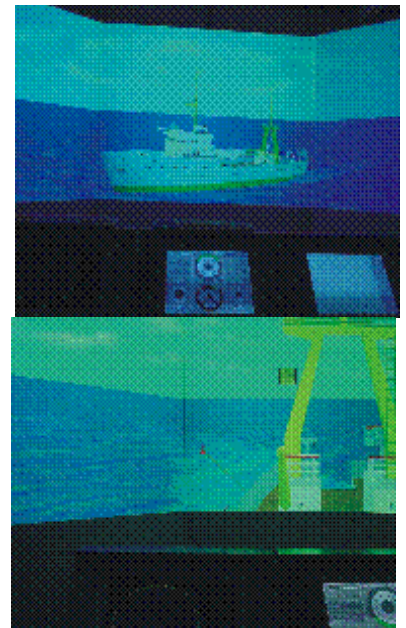


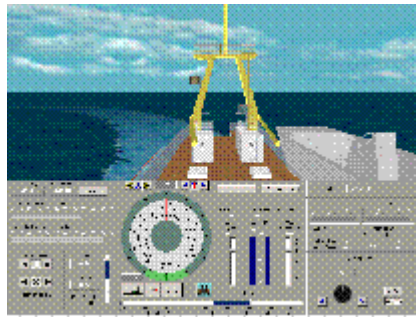


ALL SHIP-HANDLING BRIDGE FISHING SIMULATOR (FISHING, ARPA/RADAR, WATCHKEEPING AND NAVIGATIONAL SHIP-HANDLING)

VR-FISHING is the Professional Fishing, Navigational and ARPA/Radar simulator, allows to realize the different aspects of the education and the certification of navigators according to the requirements of International Agreements STCW 95/98 and STCW-F 95/98, as well as including:

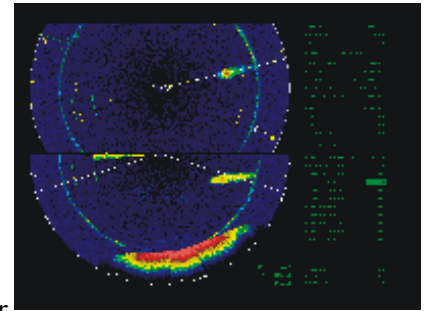
- **Primary preparation in the Simulator according to the programs:**
 - Observation by the Sonar and the Echosounder
 - Detection of fish bands
 - Positioning of the vessel
 - Launching of the procedure
- **Special preparation in the Simulator according to the programs:**
 - Observation by the ARPA/Radar and the route planning.
 - Exploitation of ARPA/Radar.
 - Electronic Chart Display and Information System (ECDIS) with a collection of official charts in formats: S-57 ed.3.1, ARCS, BSB / NOAA, DEM.
 - Monitoring of ARPA/Radar Layer on ECDIS
 - Operations and manoeuvring of the vessel.
- **The professional preparation of the navigators for fishing-ships in the simulator according to the programs:**
 - Search and estimation of the fish bands using modern fishing hydroacoustic equipment.
 - Operations and maneuvering of the vessel in the fishing by the trawlnet and seine.





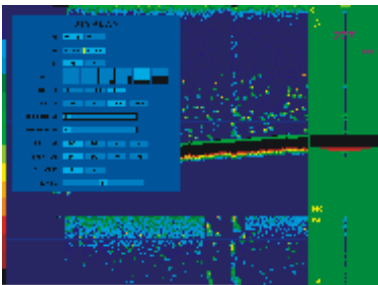
SR240 Sonar (SIMRAD):

- The frequency of work 24 kHz
- The ranges 200 , 400 , 800, 1200 , 1600 , 2400, 3200 , 4800, 6400 m
- The impulse duration from 1 till 100 ms - in the mono tone parcel, from 4 till 64 ms - in the modulated-frequency parcel
- The width of the acoustic sector is : 12 ° x 12 °
- The width of the horizontal sector is : 12 °, 90 °, 180 °, 360 °
- The electronic slope of the sector from +10 ° till -90 °
- The frequency of the sound indication from 689 to 1033 Hz
- The intensity of the signals image - echo's by 32 nuances of color
- Nine modes of the hydroacoustic information image, including the possibility of vertical cutting image and the information from Echosounder.



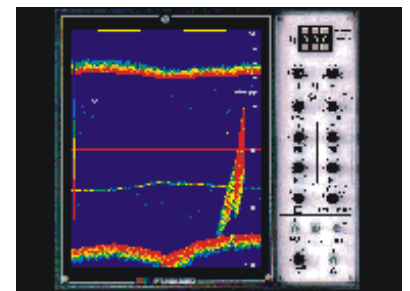
ATLAS FISCHFINDER 793 DS Echosounder (ATLAS ELEKTRONIK):

- The frequencies of work 33 and 100 kHz
- The ranges 10, 20, 50, 100, 200, 500, 1 000 m
- The ranges widened for the pelagic layer or on bottom from 6 till 120 m
- The progress of the diapason beginning: from 1 till 5 000 m
- The impulse duration from 0,15 till 10 ms
- The width of the acoustic sector is 6° x 8° or 6° x 4° on the frequency 33 kHz, 14° on the frequency 100 kHz
- The intensity of the signals image - echo's by 16 color nuances
- Six modes of the hydroacoustic information image, including the possibility of inserting and ruling the window with the sweeping amplitude



CN-14A Net Sound (FURUNO):

- The frequency of work 75 kHz
- The ranges at the top 10 , 60 , 120, 180 , 280 , 400, 500 , 600 m
- The ranges below 5 , 10 , 20, 40 , 60 , 120, 180 , 400 m
- The impulse duration is 1 ms
- The width of the acoustic sector 28°
- The intensity of the image of signals echo's by 8 nuances of color
- Four modes of the image of the hydroacoustic information, including the possibility of the fastening at the beginning of the echo towards



[Download PDF version](#)