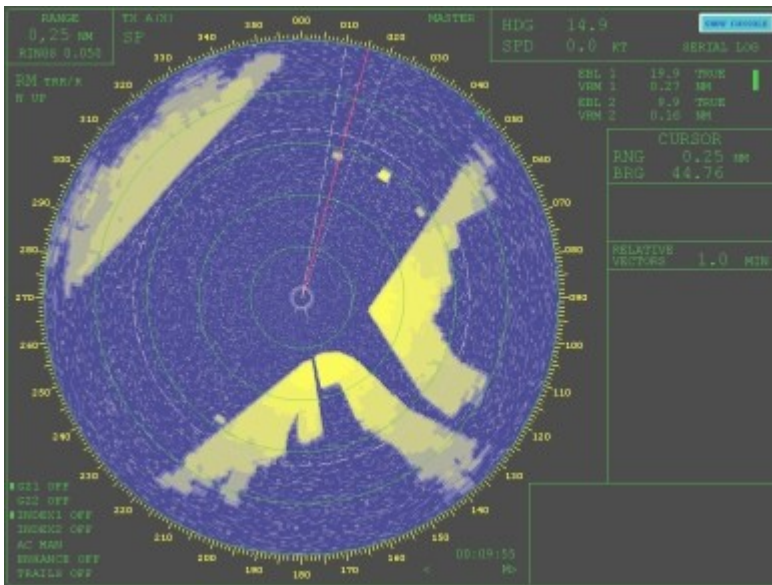




## ARPA RADAR SIMULATOR

The simulator according to the STCW-95/98 provides training in:

- Estimation of radar situation by sight
- Graphic way of a determination of a ship heading elements
- Selection and executing maneuvers to provide vessels passing at sea
- Use of ARPA
- Buoyed channel navigation
- Navigation in most complex channels and waterways
- Electronic plotting and navigational data processing



### INSTRUCTOR CONSOLE

Training, recording of training, real-time and high-speed playback of the recorded exercises.

### ARPA/RADAR SUBSYSTEM

Provides a simulation of a surface situation formed by the vessels, controlled by operators; the targets, controlled by the instructor and/or program-driven; sea marks; a coastline of particular area; radar observation interference.

The ARPA/Radar subsystem is equipped with 28" monitor.

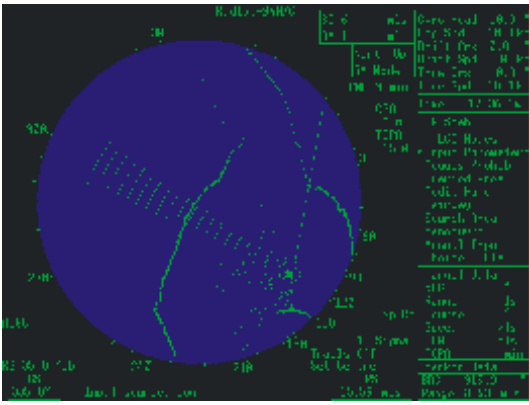
The Control of a Plan position indicator is provided by the sensor control panel.

### ECDIS SUBSYSTEM

Provide the following features: An indication of the own ship position on the electronic chart; Navigation, route planning and plotting. The Route safety check. The ECDIS subsystem is equipped with 21" monitor.

### CONNING CONSOLE

Provides the ship control and indication of a course, speed and other navigational parameters. Indication of an external conditions and depth.



- Simulated Interference - sea clutter, asynchronous interference, shadow sectors
- Number of navigational marks - Up to 100
- Number of targets - Up to 20
- Number of own ships - From 2 to 6
- Worldwide electronic database
- Water area - 100 x 100
- Displacement - From 1000 to 15 000 t

[Download PDF version](#)