



## **SIMULATOR OF GLOBAL MARITIME DISTRESS AND SAFETY SYSTEM (VR-COMM)**

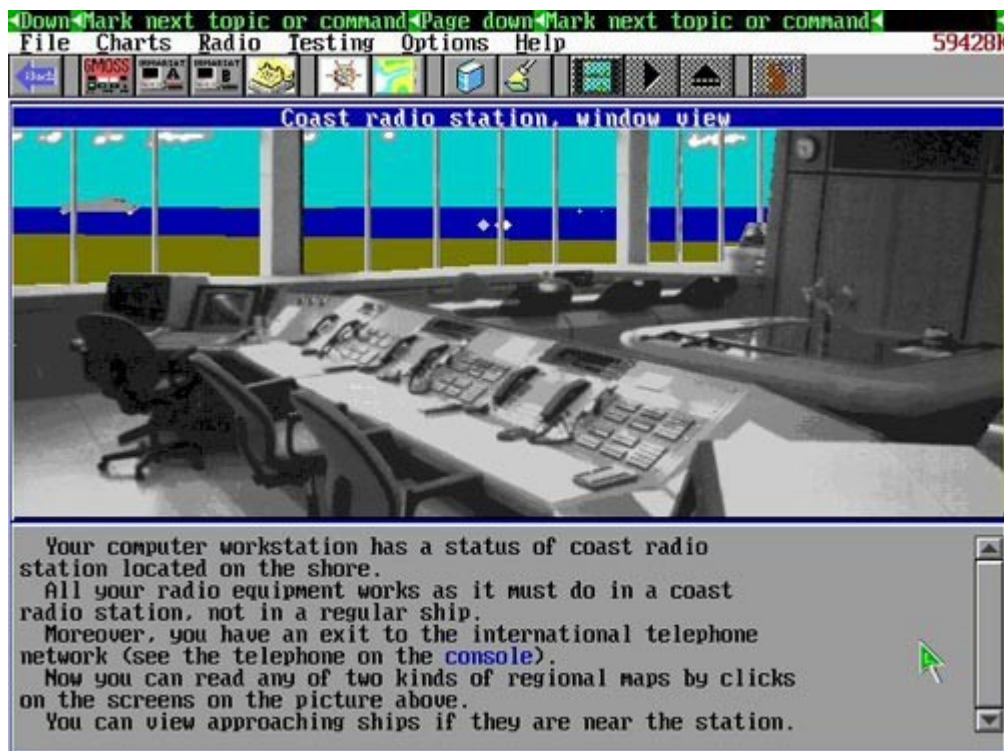
VR-COMM - a PC-based communication simulator for up to twelve students and one instructor, developed for GOC/ROC training, examination and rescue-operation simulations. Students can be trained in the network configuration or individually, it depends on their knowledge level.

The simulator has unlimited possibilities to cross connections within the network.

All our simulators have pre-programmed training plans for GMDSS/GOC, as well as pre-programmed coastal radio stations and commissioning instructions for all equipment included. Any student site can be programmed either as a ship or as a coastal radio station, depending on the training task. All our communication simulators are based on the real GMDSS equipment.

Both communication simulators have range limitations based on day time, season and geographical location for each individual student site. Noise, fading and equipment failure can be simulated as well. Any worldwide location can be chosen for each student site.

### **Virtual Representation**



◀Mark next topic or command▶  
 File Charts Radio Testing Options Help 59336K

**Inmarsat-B equipment**

This set contains equipment optional to that installed on the main GMDSS radio console. The set includes

- Inmarsat-B electronic unit.
- Inmarsat-B software.
- Inmarsat-B telephone/fax.

Introduction  
General

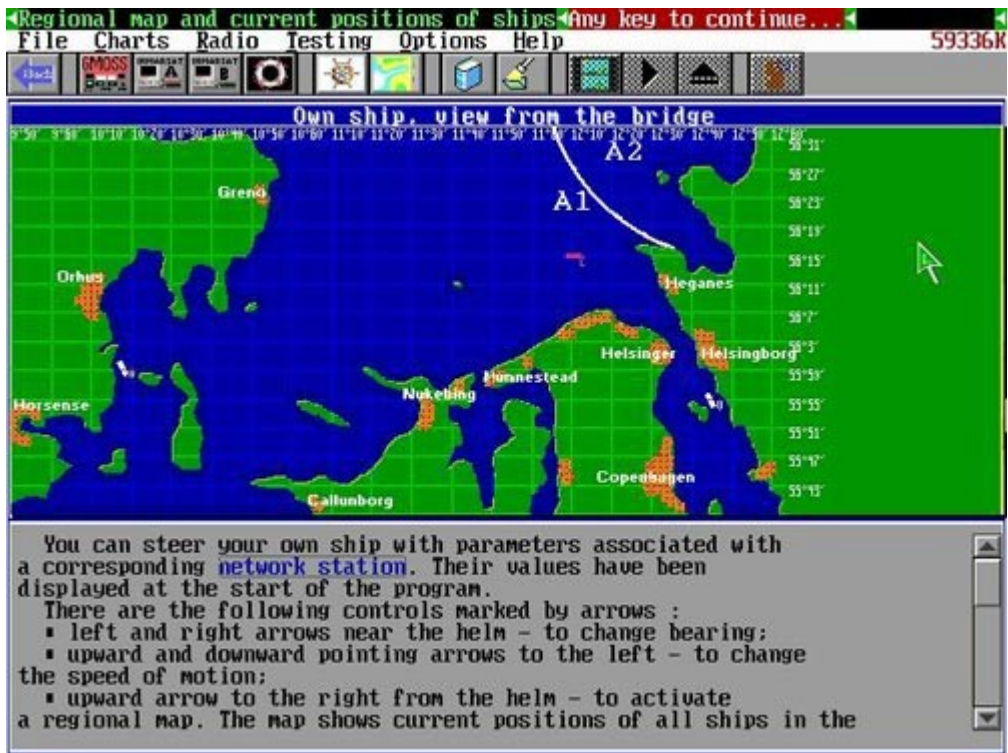
◀Mark next topic or command▶ ◀Down▶Page down▶  
 File Charts Radio Testing Options Help 59336K

**Own ship, view from the bridge**

The corresponding parameters of ship motion are reported on a GPS screen :

- heading in knots in the upper left corner;
- bearing in degrees in the lower left corner;
- latitude in the upper right and longitude in the lower right corners of the screen.

As the ship moves, you can view approaching ships, objects on the coast etc. Try not to ground or collide with another ship. If you wish to be completely safe, stop the ship.



### Dedicated Hardware (Real GMDSS Equipment)



### VR-COMM Instructor stations equipped with software-hardware simulators:

- COSTAL (SHIP) RADIO STATION SIMULATOR SUPPLIED WITH:
  - VHF radio station with DSC facility
  - MF/HF radio station with DSC facilit
  - Earth station INMARSAT-C
  - Earth station INMARSAT-B (INMARSAT-A)

- Watch Receiver 2182 KHz
- Program and methods of training with set of exercises, manuals and paperwork

### **VR-COMM Trainee stations equipped with software-hardware simulators:**

- SIMULATORS OF RADIO EQUIPMENT AND SOFTWARE ARE BASED ON CONSOLE SUPPLIED WITH:
  - VHF radio station with DSC equipment
  - VHF GMDSS watch receiver
  - MF/HF radio station with DSC equipment
  - MF/HF GMDSS DSC watch receiver
  - Ship Earth station INMARSAT-C
  - HF NBDP watch receiver
  - Receiver 2182 KHz
  - Receiver 518 KHz "NAVTEX"
  - Ship Earth INMARSAT- Terminals of standard "A", "B" and "C"
  - EPIRB
  - SART (COSPAS-SARSAT, INMARSAT, VHF)
  - Portable GMDSS VHF radiostation
  - Battery charger

[Download PDF version](#)

[Download PDF GMDSS specification](#)